



BOOM SPECIFICATIONS

Vertical reach	37.7 M	(123' 9")
Horizontal reach	34 M	(111' 7")
Reach from front of truck	31.5 M	(103' 6")
Unfolding height	9.2 M	(30' 4")
Section articulation	94° / 180° / 250° / 245°	
Rotation	370°	
Delivery line	125 mm	(5")
Proportional boom	Yes	
End hose length	3.5 M	(11' 6")
Outrigger spread-front	6.18 M	(20' 3")
Outrigger spread-rear	7.15 M	(23' 5")
Max. outrigger weight	23,500 kg	(51809 lbs)

PUMP SPECIFICATIONS

Maximum output	170 m ³ /h	(222 yd ³ /h)
Concrete cylinder	Ø230 x 2100mm (9" x 83")	
Stroke per minute	32	
Concrete pressure	70bar	(1015 psi)
Hopper capacity	0.6 m ³	(21 ft ³)
S-tube	Ø230 x Ø180 (9" x 7") Big mouth	
Hydraulic pump	Rexroth A11VLO260	
Cycling system	Hydraulic with manual overrides	
Max aggregate size	40 mm	(1 1/2")
Water Tank Volume	454 L	(120 Gal)

* Maximum theoretical values listed.

*Dimension will vary with different truck makes, models and specifications.

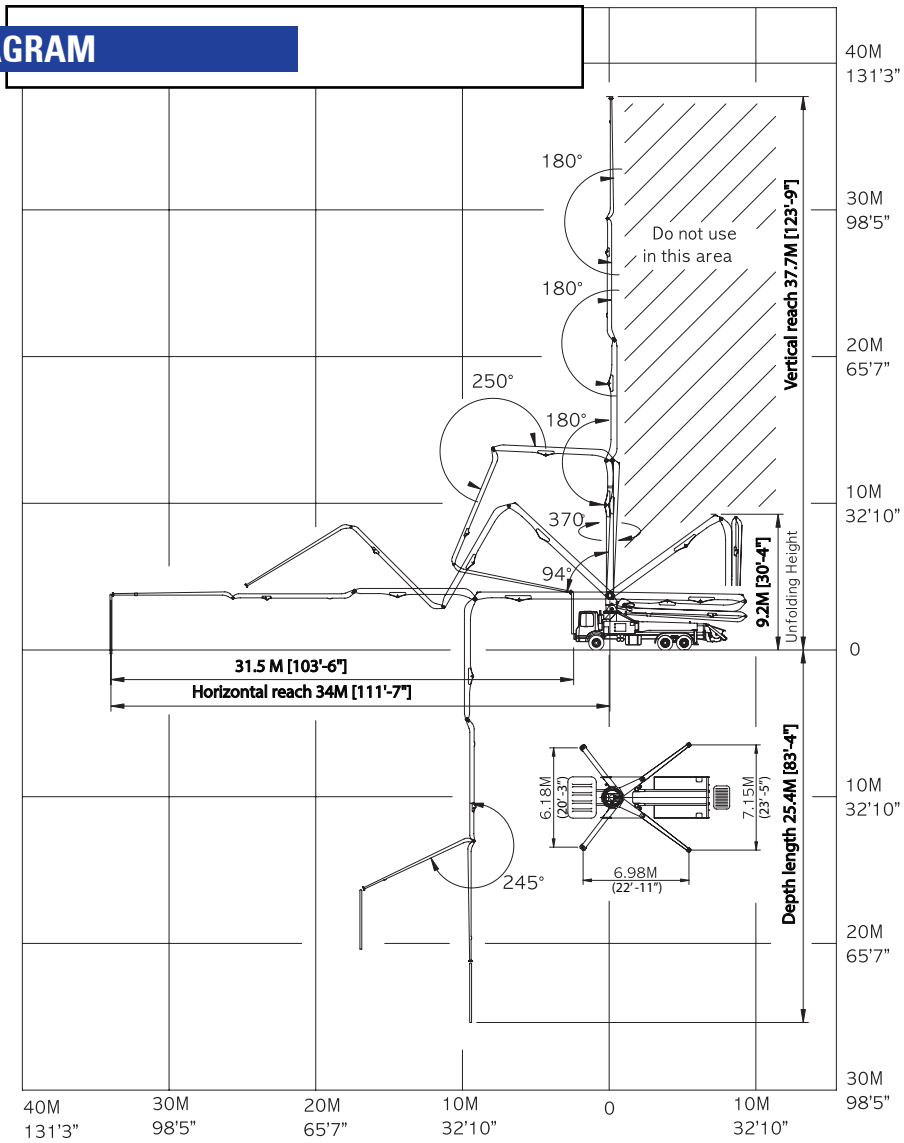
*Right to make technical amendments reserved.

TRUCK MOUNTED SPECIFICATIONS

Available: MR MACK, GRANITE MACK, PETERBILT, INTERNATIONAL, FREIGHTLINER.

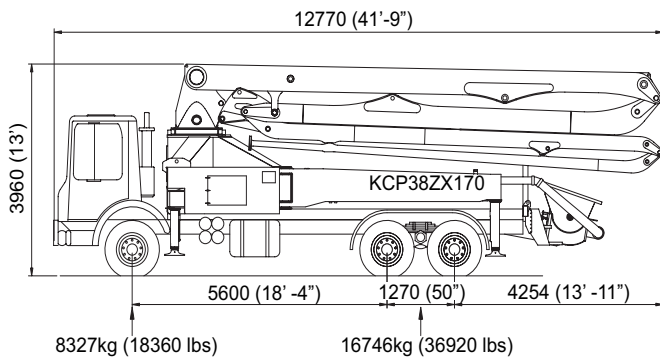
Simply the Best.

WORKING DIAGRAM

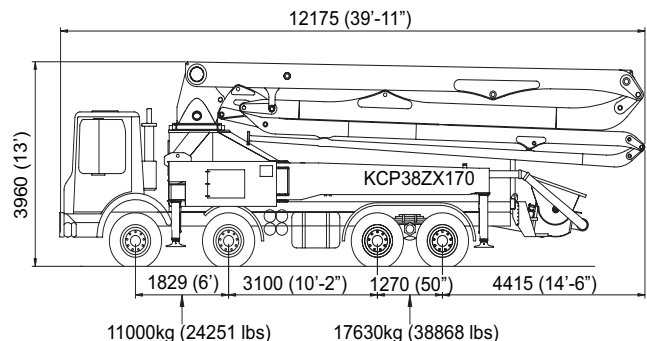


WEIGHT DIAGRAMS

*Photos and drawings are for illustrative purpose only.
 *Dimension will vary with different truck makers, models and specifications.
 *Right to make technical amendments reserved.



TOTAL: 25074kg (55280 lbs)



TOTAL: 28630kg (63120 lbs)