

KCP46ZX5170HP



BOOM SPECIFICATIONS

Vertical reach	44.3 M	(145' 5")
Horizontal reach	40.5 M	(132' 11")
Reach from front of truck	37.6 M	(123' 6")
Unfolding height	8.6 M	(28' 3")
Section articulation	92° / 180° / 225° / 180° / 245°	
Rotation	370°	
Delivery line	125mm	(5")
Proportional boom	Yes	
End hose length	3.5 M	(11' 6")
Outrigger spread-front	7.4 M	(24' 3")
Outrigger spread-rear	9.68 M	(31' 9")
Max. outrigger weight	29,000 kg	(63934 lbs)

46ZX225 - OPTIONAL

Maximum output	225 m ³ /h	(294 yd ³ /h)
Concrete cylinder	Ø280 x 2100mm (11" x 83")	
Stroke per minute	32	
Hydraulic pump	Rexroth A20VL0190	

PUMP SPECIFICATIONS

Maximum output	170 m ³ /h	(222 yd ³ /h)
Concrete cylinder	Ø230 x 2100mm (9" x 83")	
Stroke per minute	32	
Concrete pressure	95 bar	(1377 psi)
Hopper capacity	0.6 m ³	(21 ft ³)
S-tube	Ø230 x Ø180 (9" x 7") Big mouth	
Hydraulic pump	Rexroth A20VL0190	
Cycling system	Hydraulic with manual overrides	
Max aggregate size	40 mm	(1 1/2")
Water Tank Volume	600L	158.5Gal

* Maximum theoretical values listed.

*Dimension will vary with different truck makes, models and specifications.

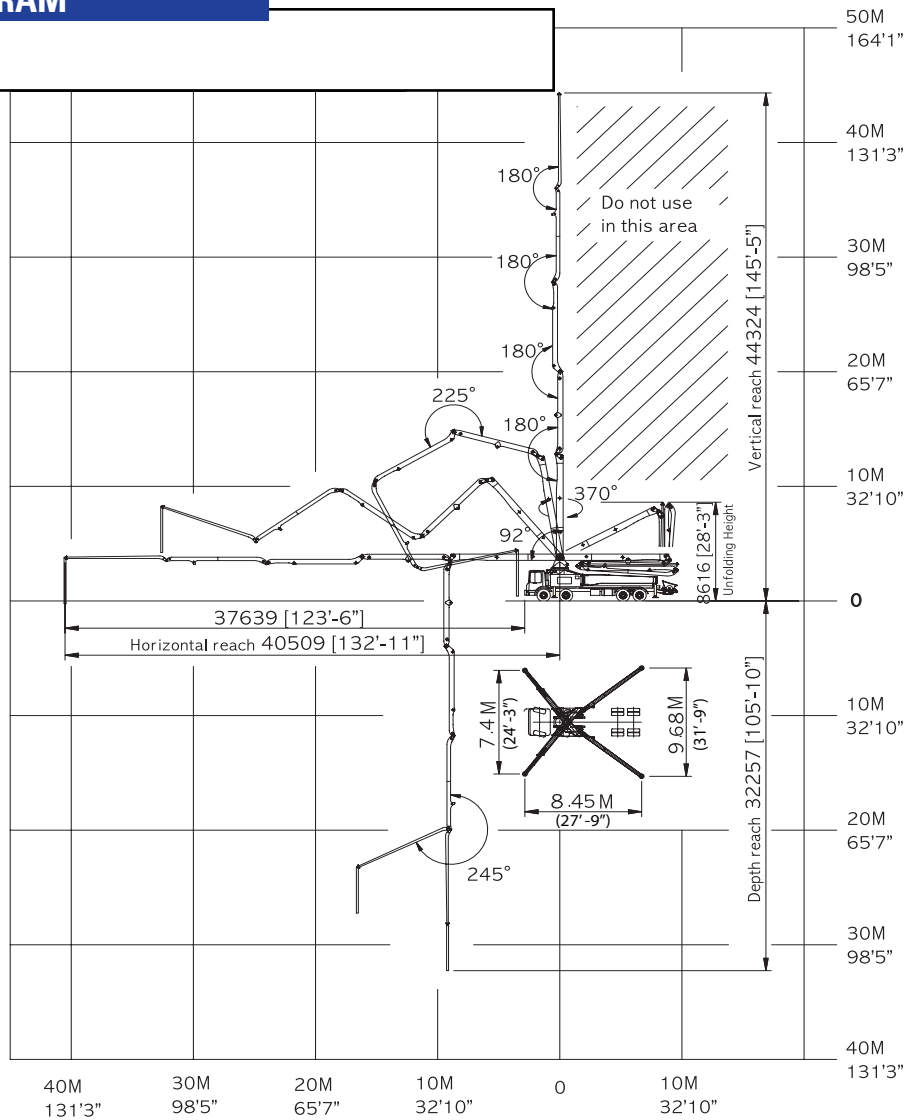
*Right to make technical amendments reserved.

TRUCK MOUNTED SPECIFICATIONS

Available: MR MACK, GRANITE MACK, PETERBILT, INTERNATIONAL, FREIGHTLINER.

Simply the Best.

WORKING DIAGRAM



WEIGHT DIAGRAMS

*Photos and drawings are for illustrative purpose only.
 *Dimension will vary with different truck makers, models and specifications.
 *Right to make technical amendments reserved.

