



## KCP70ZS5170HP

### BOOM SPECIFICATIONS

Vertical reach	69.45 M	[228' 3"]
Horizontal reach	65.22 M	[214' 2"]
Reach from front of truck	61.90 M	[203' 3"]
Unfolding height	15.6 M	[51' 2"]
Section articulation	92°/180°/200°/180°/200°	
Rotation	370°	
Delivery line	125mm	[5"]
Proportional boom	Yes	
End hose length	3.5 M	[11' 6"]
Outrigger spread-front	13.7M	[45']
Outrigger spread-rear	13.63 M	[44' 9"]
Max. outrigger weight	55,000 kg	[121,254 lbs]

### TRUCK MOUNTING OPTIONS

Available: MACK, FREIGHTLINER, AUTOCAR, etc.

### PUMP SPECIFICATIONS

Maximum output	170 m <sup>3</sup> /h	[222 yd <sup>3</sup> /h]
Concrete cylinder	Ø230 x 2100mm [9" x 83"]	
Stroke per minute	32	
Concrete pressure	95bar	
Hopper capacity	0.6 m <sup>3</sup>	[21 ft <sup>3</sup> ]
S-tube	Ø230 x Ø180mm [9" x 7"]	
Hydraulic pump	Rexroth A20VLO190	
Cycling system	Hydraulic with manual overrides	
Max aggregate size	40 mm	[1.5"]
Water tank volume	649L	171.4Gal
* Maximum theoretical values listed.		

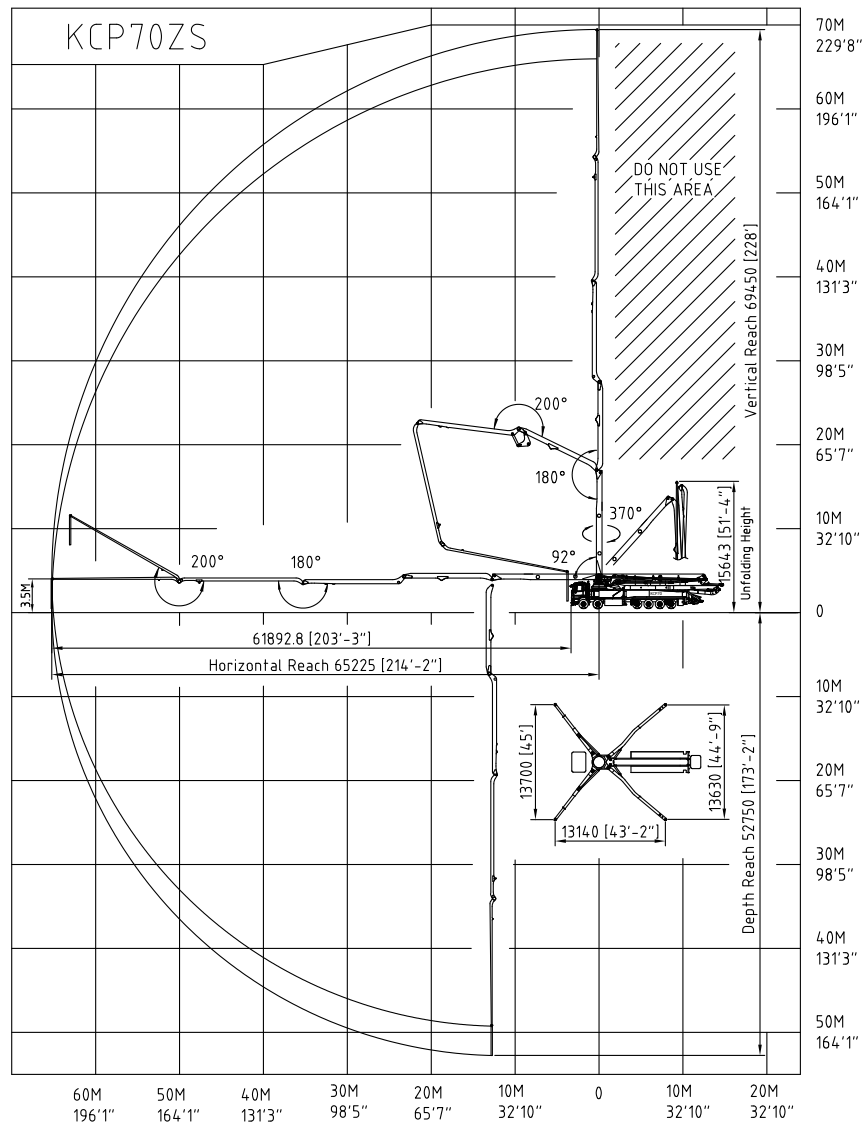
### 70ZS5 225 - OPTIONAL

Maximum output	225 m <sup>3</sup> /h	[294 yd <sup>3</sup> /h]
Concrete cylinder	Ø280 x 2100mm [11" x 83"]	
Stroke per minute	32	
Hydraulic pump	Rexroth A20VLO190	

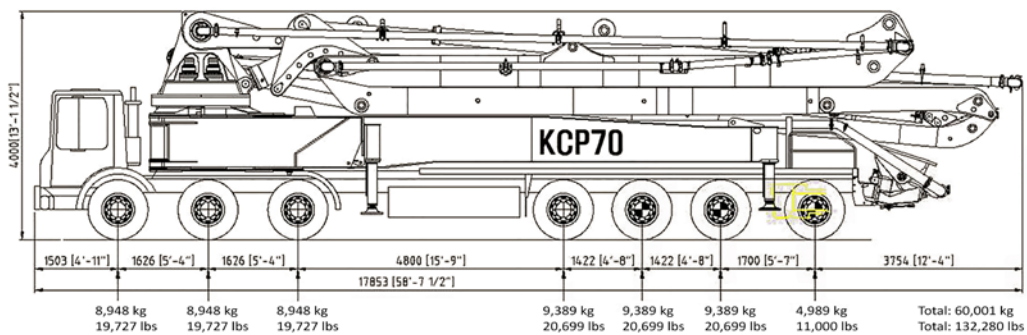
Simply the Best.

# KCP70ZS5170HP

## WORKING DIAGRAM



## WEIGHT DIAGRAM



\*Photos and drawings are for illustrative purpose only.  
 \*Dimension will vary with different truck makers, models and specifications.  
 \*Right to make technical amendments reserved.